

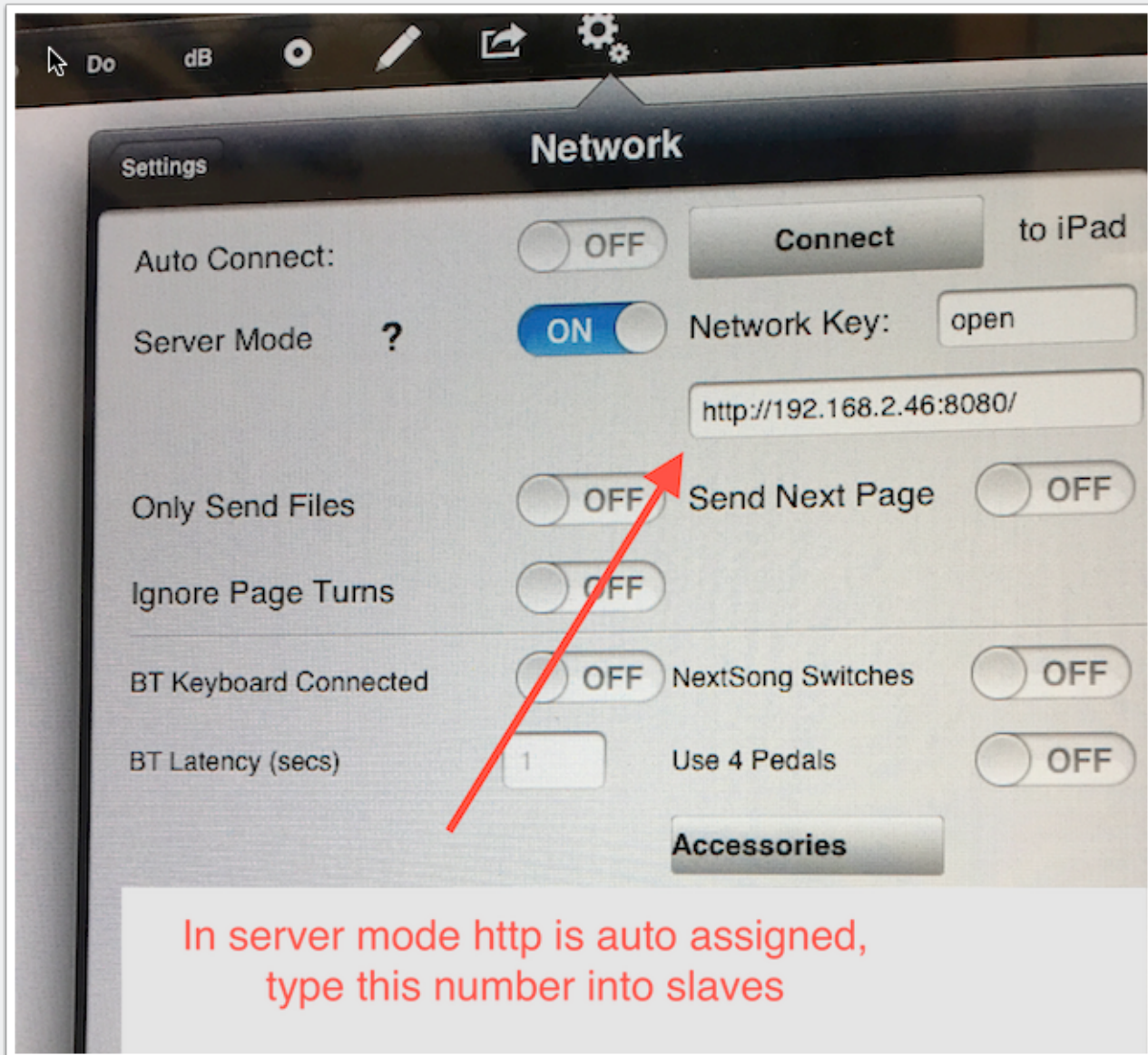
Setting up server and slave with IP address

First, make sure that all iPads are connected to the same wifi network. This method requires a wifi router - this will not work off a tethered phone.

Go to settings->network and turn on server mode for one of the iPads. Note the http:// address which is auto assigned.

In this case, the server is an iPad 1 running iOS5 and unrealBook One.

Setting up server and slave with IP address

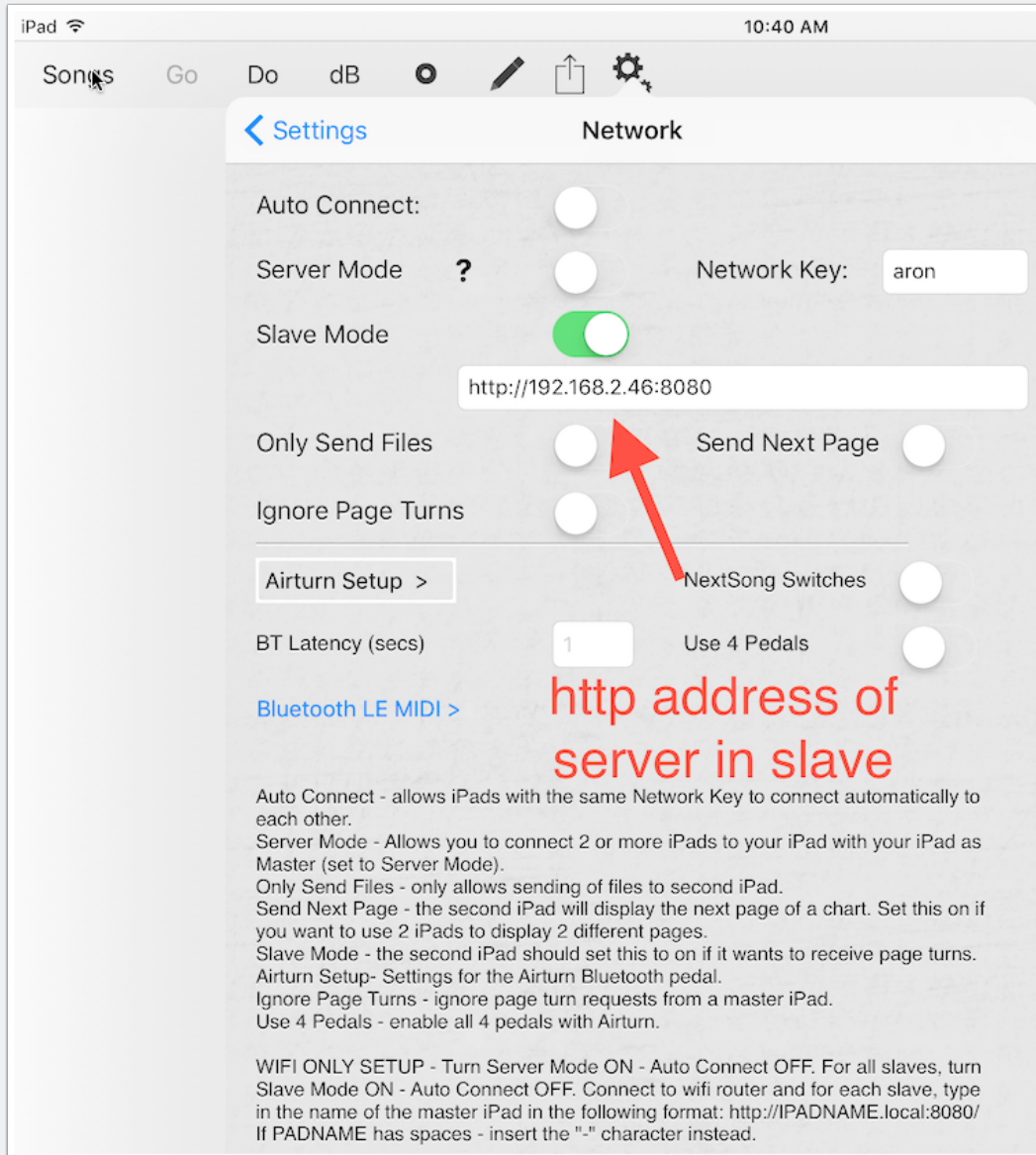


Setting up server and slave with IP address

On the slave iPad, turn on slave mode in settings->network and make sure the http:// address matches the server.

In this case, the slave is an iPad Pro.

Setting up server and slave with IP address



Now the iPad 1 will control the iPad Pro over Wifi